

D65 Useries

130mm~412mm

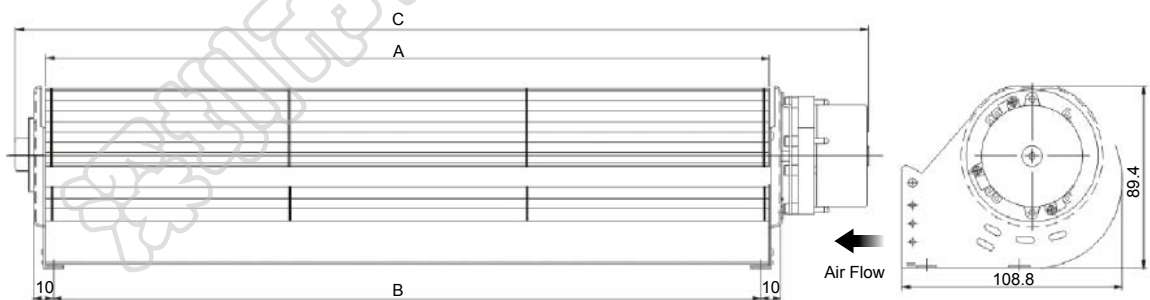
General Specifications

- Motor : 4 Poles brushless DC motor
- Frame & Impeller : Metal
- Storage temperature : -40° to +75°
- Operating temperature : -10° to +65°



Major Characteristic Parameters

Model	Size(mm)			Rated Voltage	Rated Current	Rated Speed	Maximum Air Flow		Maximum Static Pressure		Sound Level	Weight
	Part NO.	A	B				C	V	A	RPM		
CD65120A12	120	130	185	12	0.80	2200	2.3	81	8.2	0.322	49	560
CD65120A24	120	130	185	24	0.45	2200	2.3	81	8.2	0.322	49	560
CD65180A12	180	190	245	12	0.55	1500	2.7	95	3.8	0.149	45	650
CD65180A24	180	190	245	24	0.25	1500	2.7	95	3.8	0.149	45	650
CD65240A12	240	250	305	12	0.70	1400	3.5	124	3.5	0.137	43	740
CD65240A24	240	250	305	24	0.30	1400	3.5	124	3.5	0.137	43	740
CD65300A12	300	310	365	12	0.75	1300	4.1	145	3.1	0.122	43	830
CD65300A24	300	310	365	24	0.35	1300	4.1	145	3.1	0.122	43	830
CD65360A12	360	370	425	12	0.80	1200	4.7	166	2.9	0.114	45	920
CD65360A24	360	370	425	24	0.40	1200	4.7	166	2.9	0.114	45	920
CD65420A12	412	442	485	12	0.85	1100	5.4	191	2.7	0.106	45	1000
CD65420A24	412	442	485	24	0.40	1100	5.4	191	2.7	0.106	45	1000



unit:mm

